

泽瑜®



诚信 · 创新 · 共赢 · 发展

INTEGRITY · INNOVATION · WIN-WIN · DEVELOPMENT

泽瑜®

台州泽瑜机电有限公司
TAIZHOU ZEYE MACHINERY CO.,LTD

地址：浙江省台州温岭市大溪镇大溪北路478号
电话：15867656776 18869990586



[扫一扫]添加二维码

专业直流泵制造商
Professional DC pump manufacturer

台州泽瑜机电有限公司
TAIZHOU ZEYE MACHINERY CO.,LTD



泽瑜®

Enterprise introduction 企业简介》

台州泽瑜机电有限公司是一家专业生产智能变频永磁直流变频自吸泵、直流、无刷、有刷潜水泵、螺杆深井泵系列。公司位于浙江省温岭市大溪水泵之乡的东大街工业园区。本公司始终坚持“质量第一，诚信为本”的生产经营方针，深入贯彻思想”。

自我完善用户满意的营销理念。全公司全体员工竭力为广大客户带来创新的产品。优质的产品，真诚期待新老客户来电咨询洽谈合作，让我们携手共赢美好明天。

TAIZHOU ZEYU MACHINERY CO., LTD. is a professional manufacturer of intelligent variable frequency permanent magnet DC variable frequency self-priming pump, DC, brushless, brush submersible pump, screw deep well pump series. The company is located in the East Street Industrial Park of Daxi water pump Town, Wenling City, Zhejiang Province. The company has always adhered to the "quality first, integrity-based production and management policy, in-depth implementation of ideas".

The marketing concept of self-improvement and user satisfaction. All staff of the company strive to bring innovative products to our customers. High quality products, sincerely look forward to the new and old customers call to discuss cooperation, let us work together to win a better tomorrow.



01-02
智能变频永磁
无刷直流自吸泵



03
ZQB直流无刷
智能潜水泵系列



04
ZQB直流
无刷潜水泵系列



05-12
ZQB直流
潜水泵系列



13
ZQB直流
无刷深井泵系列



14
ZQB直流
深井潜水泵系列



15
ZDK直流无刷
自吸离心泵系列

泽瑜® 智能变频 永磁无刷 直流自吸泵



产品概述

该系列电泵具有电压、电流、档位、定时及故障显示，可遥控和手机远程控制。可太阳能供电和电瓶供电，有24V-36V通用款和48V-72V通用款。产品结构紧凑、轻便可手提，自吸高度可达8米，水量扬程自由掌控，电瓶可用时间一目了然。使用更经济、更安全。是取代汽油机水泵的理想产品。

Product overview

The series of pumps have voltage, current, gear, timing and fault display, which can be controlled by remote control and mobile phone. Solar power supply and battery power supply are available, including 24 v-36 V and 48 v-72 v. The product structure is compact, portable, self-priming height can reach 8 meters, water head can be controlled freely, and battery life can be seen at a glance. It is more economical and safe to use. It is an ideal product to replace the water pump of gasoline engine.

性能参数 Performance parameter

型号 TYPE	最大流量 Maximum flow (m ³ /h)	最大扬程 Maximum lift (m)	最大吸程 Suction range (m)	转速 Speed (r/min)
DC-50 2寸	10-12	7-9	8	3000
DC-50 2寸	15-17	10-12	8	3000
DC-50 2寸	18-20	16-18	8	3000
DC-50 2寸	22-25	18-20	8	3000
DC-80 3寸	15-18	5-7	8	3000
DC-80 3寸	20-25	7-9	8	3000
DC-80 3寸	24-28	10-12	8	3000
DC-80 3寸	28-32	12-15	8	3000

智能变频永磁无刷直流自吸泵 (48V-60V-72V)

Intelligent variable frequency permanent magnet brushless DC self priming pump (48V-60V-72V)



产品概述

该系列电泵具有电压、电流、档位、定时及故障显示,可遥控和手机远程控制。产品结构紧凑、轻便可手提,自吸高度可达8米,水量扬程自由掌控,电瓶可用时间一目了然。使用更经济、更安全。是取代汽油机水泵的理想产品。

Product overview

The series of pumps have voltage, current, gear, timing and fault display, which can be controlled by remote control and mobile phone. The product structure is compact, portable, self-priming height can reach 8 meters, water head can be controlled freely, and battery life can be seen at a glance. It is more economical and safe to use. It is an ideal product to replace the water pump of gasoline engine.

性能参数 Performance parameter

型号 TYPE	最大流量 Maximum flow (m ³ /h)	最大扬程 Maximum lift (m)	最大吸程 Suction range (m)	转速 Speed (r/min)
DC-50 2寸	10-12	7-9	8	3000
DC-50 2寸	15-17	10-12	8	3000
DC-50 2寸	18-20	16-18	8	3000
DC-50 2寸	22-25	18-20	8	3000
DC-80 3寸	15-18	5-7	8	3000
DC-80 3寸	20-25	7-9	8	3000
DC-80 3寸	24-28	10-12	8	3000
DC-80 3寸	28-32	12-15	8	3000

ZQB

直流无刷智能潜水泵系列

DC Brushless Intelligent Submersible Pump Series



产品用途

1. 适用于农业、工矿企业、建筑工地、别墅、特别是家庭等小型排灌或提水。
2. 应用于农村井下抽水、农田排灌、园林浇灌、家庭生活用水。
3. 在排除工业积水、建筑施工给排水及养殖等领域得以应用。

Applications

1. It is suitable for agricultural and mining enterprises construction sites, villas, especially family and other small irrigation and irrigation.
2. It is used in rural underground pumping, farmland irrigation and irrigation garden irrigation and domestic water use.
3. In the exclusion of industrial water, water supply and drainage and building construction industry and other areas can be used.

性能参数 Performance parameter

型号 TYPE	额定功率 rated power (KW)	额定流量 Rated flow rate (m ³ /h)	额定扬程 Rated lift (m)	电压 Voltage (V)	口径 Caliber (mm)
ZQB 48V-60V	1.1	25	15	48V-60V	20
ZQB 48V-60V	3.7	8-10	25	48V-60V	10

ZQB

直流无刷潜水泵系列

DC brushless submersible pump series



产品用途

1. 适用于农业、工矿企业、建筑工地、别墅、特别是家庭等小型排灌或提水。
2. 应用于农村井下抽水、农田排灌、园林浇灌、家庭生活用水。
3. 在排除工业积水、建筑施工给排水及养殖等领域得以应用。

Applications

- 1.It is suitable for agricultural and mining enterprises construction sites,villas,especially family and other small irrigation and irrigation.
- 2.It is used in rural underground pumoling,farmland irrigation and irrigation garden irrigation and domestic water use.
- 3.In the exclusion of industrial water,water supply and drainage and building construction industry and other areas can be used.

性能参数 Performance parameter

型 号 TYPE	额定功率 rated power (KW)	额定流量 Rated flow rate (m³/h)	额定扬程 Rated lift (m)	电 压 Voltage (V)	口 径 Caliber (mm)
ZQB 48V-60V	1.8	33	8	48V-60V	30
ZQB 48V-60V	1.8	30	12	48V-60V	25

ZQB

直流潜水泵系列

DC submersible pump series



产品概述

该系列电泵由于体积小、重量轻、特别适合广大农村井下抽水，农田灌溉，养殖业增氧给排水，园林浇水及旅馆、食堂、高层建筑等场所供水之用。

Product overview

Due to its small size and light weight, this series of electric pumps are particularly suitable for pumping underground wells in large rural areas, irrigation of farmland, aeration and drainage of aquaculture, watering of gardens and water supply in hotels, canteens, high-rise buildings and other places.

性能参数 Performance parameter

型 号 TYPE	额定功率 rated power (W)	最大流量 Maximum flow (m³/h)	最大扬程 Maximum lift (m)	电 压 Voltage (V)
ZQB-12V	100	8	17	12
ZQB-24V	200	8	21	24
ZQB-40-60V	400	8	25	48-60
ZQB-48-60V	500	10-15	25	48-60
ZQB-48-60V	600	28	10	48-60

ZQB

直流潜水泵系列
DC submersible pump series



产品概述

该系列电泵由于体积小、重量轻、特别适合广大农村井下抽水，农田灌溉，养殖业增氧给排水，园林浇水及旅馆、食堂、高层建筑等场所供水之用。

Product overview

Due to its small size and light weight, this series of electric pumps are particularly suitable for pumping underground wells in large rural areas, irrigation of farmland, aeration and drainage of aquaculture, watering of gardens and water supply in hotels, canteens, high-rise buildings and other places.

性能参数 Performance parameter

型号 TYPE	额定功率 rated power (W)	最大流量 Maximum flow (m ³ /h)	最大扬程 Maximum lift (m)	电压 Voltage (V)
ZQB-12V	100	8	17	12
ZQB-24V	200	8	21	24
ZQB-40-60V	400	8	25	48-60
ZQB-48-60V	500	10-15	25	48-60
ZQB-48-60V	600	28	10	48-60

ZQB

直流潜水泵系列
DC submersible pump series



产品概述

该系列电泵由于体积小、重量轻、特别适合广大农村井下抽水，农田灌溉，养殖业增氧给排水，园林浇水及旅馆、食堂、高层建筑等场所供水之用。

Product overview

Due to its small size and light weight, this series of electric pumps are particularly suitable for pumping underground wells in large rural areas, irrigation of farmland, aeration and drainage of aquaculture, watering of gardens and water supply in hotels, canteens, high-rise buildings and other places.

性能参数 Performance parameter

型号 TYPE	额定功率 rated power (W)	最大流量 Maximum flow (m ³ /h)	最大扬程 Maximum lift (m)	转速 Speed (r/min)	电压 Voltage (V)	口径 Caliber (mm)
ZQB 12V	300	3	15	3900	12V	25
ZQB 24V	350	3	18	3900	24V	25
ZQB 48V	400	8-10	16	3900	48V	25-50
ZQB 60V	400	3-4	14-15	3900	60V	25-50
ZQB 48V-60V	400	8-10	15	3900	48V-60V	25-50

ZQB

直流潜水泵系列
DC submersible pump series



产品概述

该系列电泵由于体积小、重量轻、特别适合广大农村井下抽水，农田灌溉，养殖业增氧给排水，园林浇水及旅馆、食堂、高层建筑等场所供水之用。

Product overview

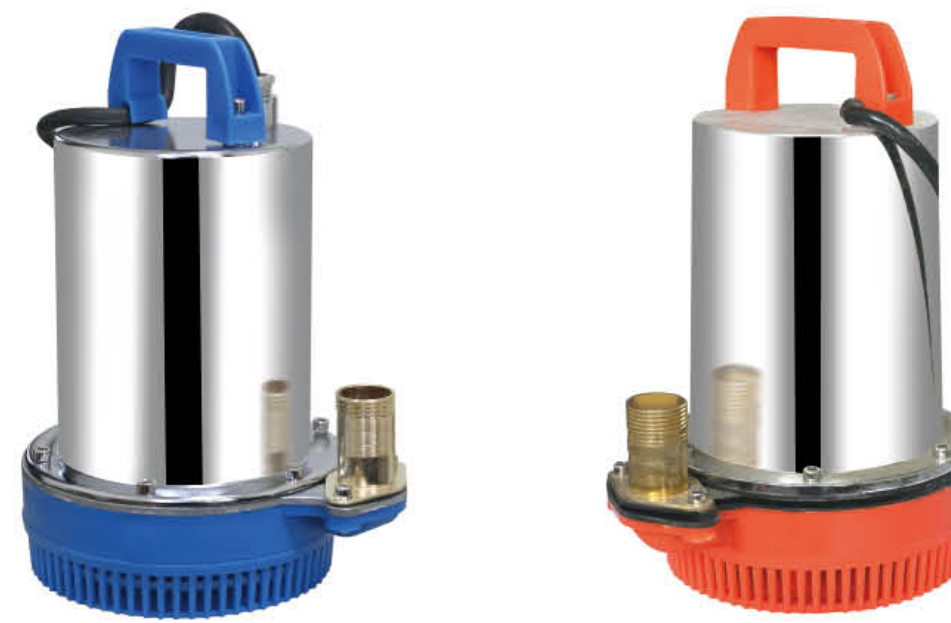
Due to its small size and light weight, this series of electric pumps are particularly suitable for pumping underground wells in large rural areas, irrigation of farmland, aeration and drainage of aquaculture, watering of gardens and water supply in hotels, canteens, high-rise buildings and other places.

性能参数 Performance parameter

型号 TYPE	额定功率 rated power (W)	最大流量 Maximum flow (m³/h)	最大扬程 Maximum lift (m)	转速 Speed (r/min)	电压 Voltage (V)	口径 Caliber (mm)
ZQB 12V	300	3	15	3900	12V	25
ZQB 24V	350	3	18	3900	24V	25
ZQB 48V	400	3-4	20-30	3900	48V	25-50
ZQB 60V	400	3-4	20-30	3900	60V	25-50
ZQB 48V-60V	400	3-4	20-30	3900	48V-60V	25-50
ZQB 72V	500	3-5	20-30	3900	72V	25-50

ZQB

直流潜水泵系列
DC submersible pump series



产品概述

该系列电泵由于体积小、重量轻、特别适合广大农村井下抽水，农田灌溉，养殖业增氧给排水，园林浇水及旅馆、食堂、高层建筑等场所供水之用。

Product overview

Due to its small size and light weight, this series of electric pumps are particularly suitable for pumping underground wells in large rural areas, irrigation of farmland, aeration and drainage of aquaculture, watering of gardens and water supply in hotels, canteens, high-rise buildings and other places.

性能参数 Performance parameter

型号 TYPE	额定功率 rated power (W)	最大流量 Maximum flow (m³/h)	最大扬程 Maximum lift (m)	电压 Voltage (V)
ZQB6x8-12V	120	3	8	12
ZQB6x8-24V	180	3	10-11	24
ZQBx8-60V	380	6.2	10-12	60
ZQBx8-48V	380	6.7	10-14	48
ZQBx8-72V	400	6	10-12	72
ZQBx8-48-60V	420	5.8	10-12	48-60

ZQB

直流潜水泵系列
DC submersible pump series



产品概述

该系列电泵由于体积小、重量轻、特别适合广大农村井下抽水，农田灌溉，养殖业增氧给排水，园林浇水及旅馆、食堂、高层建筑等场所供水之用。

Product overview

Due to its small size and light weight, this series of electric pumps are particularly suitable for pumping underground wells in large rural areas, irrigation of farmland, aeration and drainage of aquaculture, watering of gardens and water supply in hotels, canteens, high-rise buildings and other places.

性能参数 Performance parameter

型号 TYPE	额定功率 rated power (W)	最大流量 Maximum flow (m³/h)	最大扬程 Maximum lift (m)	电压 Voltage (V)
ZQB6x8-12V	120	3	8	12
ZQB6x8-24V	180	3	10	24
ZQBx8-60V	380	6.8	11	60
ZQBx8-48V	380	6.8	10-13	48
ZQBx8-72V	400	7	10	72
ZQBx8-48-60V	420	6	12	48-60

ZQB

直流潜水泵系列
DC submersible pump series



产品概述

该系列电泵由于体积小、重量轻、特别适合广大农村井下抽水，农田灌溉，养殖业增氧给排水，园林浇水及旅馆、食堂、高层建筑等场所供水之用。

Product overview

Due to its small size and light weight, this series of electric pumps are particularly suitable for pumping underground wells in large rural areas, irrigation of farmland, aeration and drainage of aquaculture, watering of gardens and water supply in hotels, canteens, high-rise buildings and other places.

性能参数 Performance parameter

型号 TYPE	额定功率 rated power (W)	最大流量 Maximum flow (m³/h)	最大扬程 Maximum lift (m)	转速 Speed (r/min)	电压 Voltage (V)	口径 Caliber (mm)
ZQB 12V	300	3	15	3900	12V	25
ZQB 24V	350	3	18	3900	24V	25
ZQB 48V	400	8-10	16	3900	48V	25-50
ZQB 60V	400	3-4	14-15	3900	60V	25-50
ZQB 48V-60V	400	8-10	15	3900	48V-60V	25-50

ZQB

直流潜水泵系列
DC submersible pump series



产品概述

该系列电泵由于体积小、重量轻、特别适合广大农村井下抽水，农田灌溉，养殖业增氧给排水，园林浇水及旅馆、食堂、高层建筑等场所供水之用。

Product overview

Due to its small size and light weight, this series of electric pumps are particularly suitable for pumping underground wells in large rural areas, irrigation of farmland, aeration and drainage of aquaculture, watering of gardens and water supply in hotels, canteens, high-rise buildings and other places.

性能参数 Performance parameter

型号 TYPE	额定功率 rated power (W)	最大流量 Maximum flow (m³/h)	最大扬程 Maximum lift (m)	电压 Voltage (V)
ZQB6x8-12V	160	5	6	12
ZQB6x8-24V	220	6	8	24
ZQBx8-60V	550	6.8	12-13	60
ZQBx8-72V	580	7.1	11-12	72
ZQBx8-48-60V	550	6.5	10-12	48-60

ZQB

直流无刷深井泵系列
DC Brush free deep well pump series

产品概述

该系列电泵由于体积小、重量轻、特别适合广大农村井下抽水，农田灌溉，养殖业增氧给排水，园林浇水及旅馆、食堂、高层建筑等场所供水之用。

Product overview

Due to its small size and light weight, this series of electric pumps are particularly suitable for pumping underground wells in large rural areas, irrigation of farmland, aeration and drainage of aquaculture, watering of gardens and water supply in hotels, canteens, high-rise buildings and other places.



性能参数 Performance parameter

型号 TYPE	额定功率 rated power (W)	最大流量 Maximum flow (m³/h)	最大扬程 Maximum lift (m)	转速 Speed (r/min)	电压 Voltage (V)
ZQB 48V-60V	600	3.8	56	5200	48V-60V

ZQB

直流深井潜水泵系列
DC deep well submersible pump series

产品用途

主要用于矿山机械、工程机械、建筑工地、渔船、等设备加油及汽车自备电源加油与输送。本泵具有自吸快、扬程高、体积小、携带方便等优点。

Applications

It is mainly used in mine machinery,engineering machinery construction sites,fishing boats, and other equipment refueling and automobiles. Self supply power supply and transportatn.This pump has the advantages of fast self suction,high lift,small volume,convenient carrying and so on.



性能参数 Performance parameter

型 号 TYPE	额定功率 rated power (W)	最大流量 Maximum flow (m³/h)	最大扬程 Maximum lift (m)	转 速 Speed (r/min)	电 压 Voltage (V)	口 径 Caliber (mm)
ZQB 12V	300	3	15	3900	12V	25
ZQB 24V	350	3	18	3900	24V	25
ZQB 48V	400	6-8	20-30	3900	48V	25-50
ZQB 48V-60V	950	6-8	20-33	3900	48V-60V	25-50
ZQB 48V-60V	980	6-8	50-80	3900	48V-60V	25-50

ZDK

直流无刷自吸离心泵系列
DC brushless self-priming centrifugal pump series



性能参数 Performance parameter

型 号 TYPE	额定功率 rated power (W)	电 流 Current (A)	最大扬程 Maximum lift (m)	转 速 Speed (r/min)	流 量 Flow (m³/h)	口 径 Caliber (寸)
ZDK 48V-60V	1100	16	25	4800	18	2 寸